

DETAIL NO: H10 SCALE: 1:100  
DETAIL DESCRIPTION: TOILET BLOCKS H,I,J & K (ALTERNATIVE)

#### TRUSS:H1

9 @ 1176 C/C

SCALE: 1:50

11500mm PURLIN C/C

TIMBER SIZES:

BC = 38x111 (S)

TC = 38x111 (S)

WBSS 38x 73 (S)

SPICES:

BC = M10X10

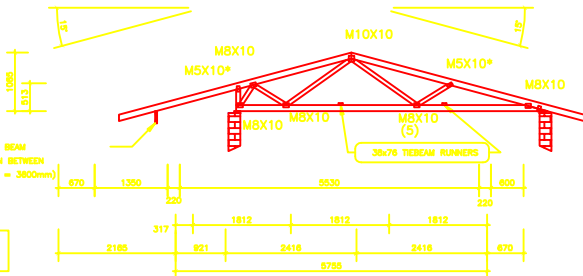
TC = M10X10

STITCH=JM5X10

NOTE TRUSS IS NOT SYMMETRICAL

CARE TO BE TAKEN WHEN ERECTING

(NOT S15)



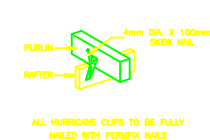
DETAIL NO: H11 SCALE: 1:50  
DETAIL DESCRIPTION: TOILET BLOCKS : TRUSS : H1

#### LEGEND:

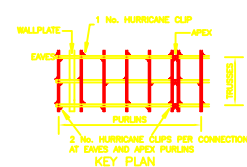
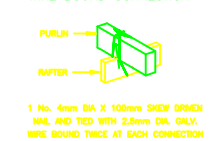
- BCR - 38x76 tiebeam runners. See detail SBBS.
- BBS - Tiebeam Teco Speedbrace. See detail SBBS.
- SBTS - Rafter Teco Speedbrace. See detail SBTS.
- SBHB - See detail SBHB.
- SBHC - See detail SBHC.

BLOCK H - TOILET BLOCK  
(blocks I, J & K similar)

#### HURRICANE CLIP CONNECTION



#### WIRE BOUND CONNECTION

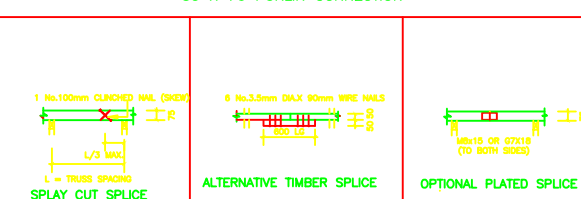


ALL PURLINS TO BE PLACED ON EDGE AND ERECTED TO THE CENTRES AS SPECIFIED BY THE DESIGNER - PURLIN SPLICING TO BE STAGGERED - REFER TO DETAIL PC FOR SPLICING OF PURLINS

2 No. HURRICANE CLIPS REQUIRED AT EACH CONNECTION TO APX AND EAVES THEREAFTER 1 No. HURRICANE CLIP REQUIRED TO EACH CONNECTION ON ALTERNATING SIDES OF RAFTER AS SHOWN ON KEY PLAN

N.B. IF CLOUT NAILS ARE USED IN PLACE OF PERMIFIX NAILS THEN 2 No. HURRICANE CLIPS ARE REQUIRED AT ALL CONNECTIONS

#### 50 X 76 PURLIN CONNECTION



#### PURLIN SPLICE DETAILS

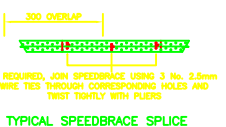
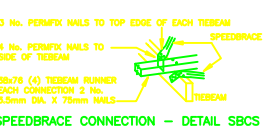
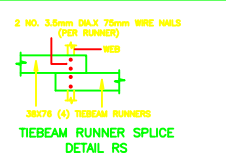
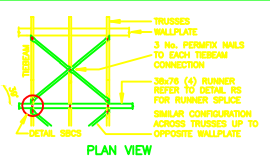
DETAIL NO: H17 SCALE: NTS  
DETAIL DESCRIPTION: PURLIN SPLICE DETAIL - DETAIL PC

THIS ROOF STRUCTURE MUST BE INSPECTED BY A PROFESSIONAL ENGINEER OR OTHER APPROVED REGISTERED COMPETENT PERSON IN ACCORDANCE WITH THE REQUIREMENTS OF THE NATIONAL BUILDING REGULATIONS.

THIS ROOF SHOULD BE ERECTED BY AN ITC CERTIFICATED ROOF ERECTOR - CATEGORY B.

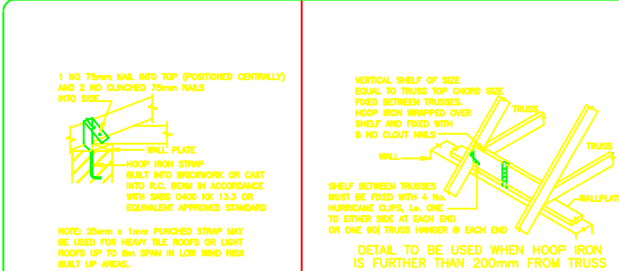
ALL TRUSS TIMBER TO BE FACE MARKED WITH THE CORRECT SABS OR EQUIVALENT GRADE.

THIS DRAWING HAS BEEN CHECKED IN COMPLIANCE WITH THE ISO 9001 QUALITY PROCEDURES MANUAL CLAUSE 4.7 ITEMS 4,5,6 & 7

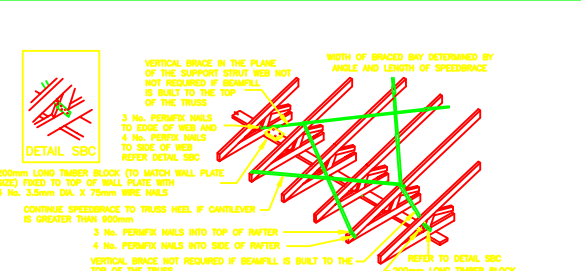


#### TIEBEAM BRACING WITH SPEEDBRACE FOR LIGHT WEIGHT ROOFS

DETAIL NO: H12 SCALE: NTS  
DETAIL DESCRIPTION: TIEBEAM BRACING - DETAIL SBBS



DETAIL NO: H15 SCALE: NTS  
DETAIL DESCRIPTION: HOOP IRON STRAP - DETAIL HD



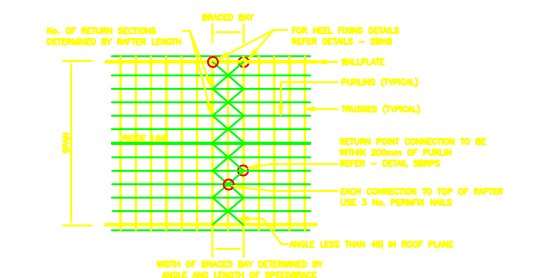
#### SPEEDBRACE WALL CONNECTION FOR CANTILEVER TRUSSES

DETAIL NO: H18 SCALE: NTS  
DETAIL DESCRIPTION: SPEEDBRACE WALL CONNECTION-CANTILEVER TRUSSES-DETAIL SBHC

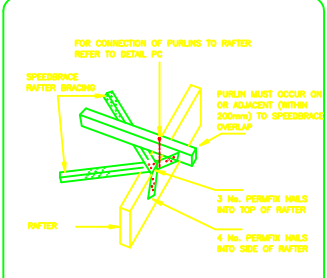
#### GENERAL NOTES FOR SHEETED ROOFS

- NAILS  
NAILS ARE TO BE 3.5mm DIA. X 75mm LONG UNLESS OTHERWISE SHOWN  
CLOUT NAILS ARE TO BE 2.5mm DIA. X 40mm LONG GALV. CLOUT NAILS UNLESS OTHERWISE SHOWN  
MINIMUM SPACING = 108  
MIN. EDGE DISTANCE = 54  
MIN. END DISTANCE = 154
- TIMBER  
ALL BRACING TIMBER TO BE MINIMUM GRADE (V).
- ALL PURLIN TIMBERS TO BE TO SABS S45 OR EQUIVALENT STANDARD.
- PURLIN TO RAFTER CONNECTION AS PER DETAIL PC
- TRUSSES SHALL BE PLUMB & STRAIGHT BEFORE BRACING & PURLINS ARE ATTACHED
- PURLIN JOINTS TO BE STAGGERED, SPLICE PURLINS AS PER DETAIL-PC
- TIEBEAM RUNNER JOINTS TO BE STAGGERED AND SPLICED TO DETAIL RS
- DIAGONAL BRACING MEMBERS ARE TO BE NAILED TO RAFTERS OR TIEBEAMS AS INDICATED IN RELEVANT DETAILS
- ALL BRACING, INCLUDING WEB BRACING AND RUNNERS WHERE REQUIRED TO BE FIXED IN POSITION BEFORE ROOF IS LOADED
- ALL BRACING MUST BE NAILED TO EACH TRUSS OF 2PLY, 3PLY & 4PLY MULTI-MEMBER
- TRUSSES TO BE FIXED TO WALLS IN ACCORDANCE WITH DETAIL HO OR OTHER TRUSSES HOLDING DOWN DETAILS.
- ALL DETAILS MAY BE SUPERSEDED BY AN APPROPRIATE METHOD PROVIDED BY A PROFESSIONAL ENGINEER

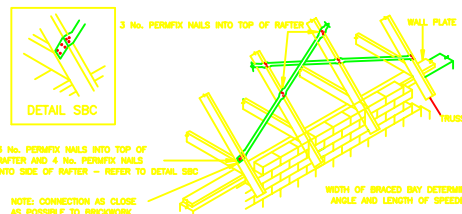
DETAIL NO: H16 SCALE: NTS  
DETAIL DESCRIPTION: GENERAL NOTES - DETAIL GNSHEET



DETAIL NO: H13 SCALE: NTS  
DETAIL DESCRIPTION: RAFTER SPEEDBRACE LAYOUT - DETAILS SBTS



DETAIL NO: H14 SCALE: NTS  
DETAIL DESCRIPTION: CONNECTION-DETAIL SBRRPS



DETAIL NO: H19 SCALE: NTS  
DETAIL DESCRIPTION: GENERAL NOTES

UPDATED: JUNE 2000

COPYRIGHT IS VESTED IN THE GOVERNMENT OF THE REPUBLIC OF SOUTH AFRICA IN TERMS OF THE COPYRIGHT ACT (ACT 95 OF 1978)

ALL DIMENSIONS ARE INDICATED IN MILLIMETRES AND MUST BE CONTROLLED OR SET. THE DRAWING MUST NOT BE SCALED. ONLY PRINTED DIMENSIONS MAY BE USED.

#### NOTES:

1. TRUSSES TO BE ERECTED IN STRICT ACCORDANCE WITH THE PROCEDURES AND REGULATIONS OF THE UNIMSA "THE ERECTION AND BRACING OF TRUSS ROOF TRUSSES" AS PUBLISHED THROUGH THE TRUSS PULTE ASSOCIATION OF SOUTHERN AFRICA AND THE NATIONAL TRUSS RESEARCH INSTITUTE OF THE CSIR.

2. All connector plates on this drawing are to be SABS or equivalent standard and to be supplied by an approved licensed fabricator.

#### CONSULTANT:



#### PROJECT:

PROPOSED CHIEF BAMBATA PRIMARY SCHOOL (TYPE A)

#### FULL DESCRIPTION OF DRAWING:

WORKING DRAWING:  
TOILET BLOCKS: H,I,J & K  
ROOF LAYOUT, TRUSS & BRACING DETAILS  
(ALTERNATIVE ROOF LAYOUT)

SCALE: AS SHOWN	SITE NUMBER: STAND 3466
TOWNSHIP: EVATON WEST EXT. 1	REGION: EMFULENI
DRAWN: BHARAT TRIKAM	DATE: 14/11/02
CHECKED: BHARAT TRIKAM	DATE: 14/11/02
RECOMMENDED:	DATE:
RECOMMENDED:	DATE:
APPROVED:	DATE:

SUPERINTENDENT-GENERAL EDUCATION

**SAUTENS**  
DEPARTMENT of  
EDUCATION

DIRECTORATE: BUILDING SERVICES  
P.O. BOX 7710 JOHANNESBURG 2000

VARIATIONS:	No.	DATE	INITIAL	DESCRIPTION

OOG - 1319/19

DRAWING NUMBER:

B-T27/19